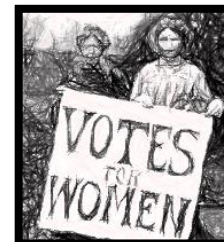
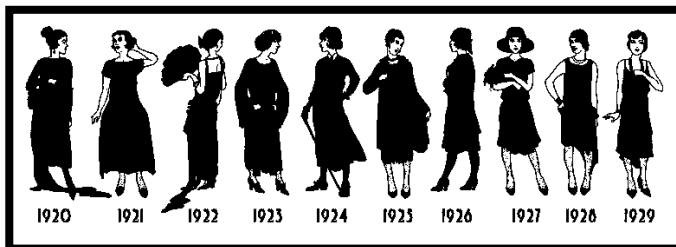


Delta Kappa Gamma Society International

Founded by Dr. Annie Webb Blanton, Austin, TX - 1929

Since its founding, the society has grown into the largest educational, honorary, and professional organization in the world.



1920

Gamma Gamma Chapter History

On Saturday, January 14, 1967, sixteen women educators from the Schaumburg and Elk Grove areas, et al, met at Old Orchard Country Club in Mt. Prospect, Illinois. They were to become Charter Members of Gamma Gamma Chapter 75 of The Delta Kappa Gamma Society International. Alpha Psi Chapter sponsored the new chapter and proved to be a guiding light during the first year of Gamma Gamma's existence. Charter Day was a busy one for all. The initiation of the new members, conducted by Lambda State and Alpha Psi, was followed by the formal installation of Gamma Gamma Chapter.



Charter Members - 1967

Christine Anderson Elementary School Principal, SD 59
Felicia Cichy 6th Grade Teacher, SD 54
Dorothy Gallagher 4th Grade Teacher, SD 54
Norma Harmon Psycho-Educational Diagnostician, SD 54
Marjorie Hughes 5th Grade Teacher, SD 54
Mary Kay Jones Guidance Counselor, SD 54
Gloria Kinny Director Federal Planning Grant, SD 54
Dorothy Koller Principal, SD 54

Mary Kooyumjian Director In-Service, SD 59
Ruth Mc Intyre Middle School Science, Barrington
Vervia Pratt Language Arts, SD 59
Hilda Scholler Physical Education, SD 54
Vernetta Schwartz 4th Grade Teacher, SD 54
Nancy Jo Telford Psycho-Educational Diagnostician, SD 54
Mary Zimmerman Principal, SD 54